

JULY 2021

PALO VERDE PARK POST

The official newsletter of the Palo Verde Park Neighborhood Association



Welcome to the
Palo Verde Park Neighborhood Association

THE HISTORY HUB

Miramonte Terrace is one of two subdivisions in our neighborhood that made a prioritization list for historic preservation. A report by the City of Tucson's Historic Preservation Office examined 240 subdivisions built between 1945-75 for three elements: planning, architecture and landscape design. Miramonte Terrace was among many subdivisions built in the city's eastward march to meet a post-war housing boom in Tucson, which saw its population grow from 70,000 in 1940 to more than 250,000 in 1960. The report ultimately prioritized 37 subdivisions, placing a portion of Miramonte Terrace on the second tier priority list for its distinctive collection of Modern Ranch houses, featuring decorative masonry, ribbon windows and more. Next month we'll share the other one.

www.paloverdeparkneighborhood.com



Palo Verde Park Neighborhood



paloverdeparkneighborhood

We did it! Fundraising Drive Successful for Playground Mural

A note of thanks to everyone who donated to our fundraising drive for a new mural on the pony wall at the playground.

We met our target within one week of launching our online drive, with nearly two dozen donors. Volunteers braved the summer temps to scrape off layers of flaking paint. The next step in the process is to prepare the surface for painting, which will be no small task. Stay posted! We'll keep you updated on our progress!



Swingsets Get New Colors

If you're going to paint swingsets, working in the heat of the summer means there's no competition with the kiddos for the playground equipment! Thanks City of Tucson for the paint!



Progress with Pollinators

We're really jazzed about our new partnership with The Tucson Audubon Society. The Society recently helped the Reid Park Zoo with its new pollinator garden, and has been working to support other urban pollinator garden projects around town.

Kari, the group's Senior Restoration Project Manager and landscape designer, came out to look at our east side parcel and is working up a design for us!

We plan to build out a few berms and grow as we have success.

Stay posted on ways you can sponsor some native plants and how you can join our upcoming planting party!



Mark Your Calendars for Our Upcoming Events

August 5:

First day of school at Kellond, Booth-Fickett and Palo Verde. Here's to a year of exploration and discovery for students and teachers!!



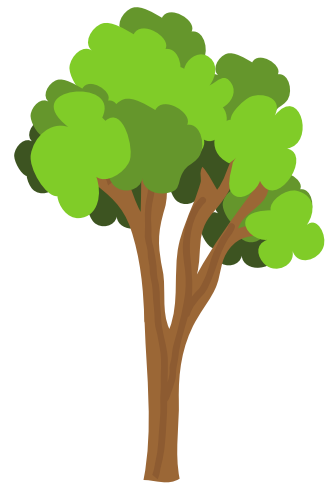
September 18:



Join us at the mural from 9 a.m. - 10:30 a.m. to learn how to make recycled pop art flowers. We'll have flowers available for the first 50 participants and we'll bring the paint supplies.

October 17:

Save the date for a celebration of all things trees. The City of Tucson and Tucson Clean & Beautiful will be at our park with discounted trees for purchase, as well as planting demonstrations and more. Details to come!



We're Looking for Judges!

Halloween and Christmas are closer than they seem! We'll be having our annual holiday decorating contests and we'd love some judging help! Drop us a line if you're game!

A note of thanks to our sponsors

Applause to Tread Lightly Carpet Care! Owner Matt Russell, a Palo Verde Park Neighborhood resident, was our first sign sponsor! He and his wife, Cathy, support all of our events and have been critical to our events.

Other donors and stalwart friends include:

- Arizona Beer House
- Little Anthony's
- Stewart Title & Trust of Tucson, Inc.
- Community Medical Services
- Bookmans
- Brian and Kelly's Pumpkins

Palo Verde Park has numerous independent and small businesses. Please support them.

Other event and sign sponsors include:

Andy and Diane Weiss

Vonnie Baldwin

Jeremy and Rachael Blackketter

Mike Southworth and Giuliano De Santis

Mike and Toni Krause

Mia Ford

Norma and Dave Coffman

Rhonda Bodfield and Fred Araiza

Christine Cerda

Brett Lange

Connie Sadler-Nelson

And everyone who contributed to our Go Fund Me page!
Thanks to Fred Araiza, too, for hand-etching and building the labyrinth sign. Go check it out!