

PALO VERDE PARK POST

The official newsletter of the Palo Verde Park Neighborhood Association



Welcome to the
Palo Verde Park Neighborhood Association

President's Corner

With the economy reopening in fits and starts, with physical distance a way to stay safe and now with the forest closed as a result of wildfire damage, our natural spaces have become more important than ever.

Even amidst a quiet monsoon season and the heat of the dog days of summer, our park is a refuge. It's a way to stay active, to say hello to your neighbors and a way to revel in being anywhere but inside.

Over the next few months, we'll have a few, safe events in our park. Read on and hope to see you soon.



Follow us on:

www.paloverdeparkneighborhood.com



Palo Verde Park Neighborhood



paloverdeparkneighborhood

THE HISTORY HUB

Did you know that this neighborhood has a long history of appreciating infrastructure improvements?

In September 1963, nearly 1,000 neighbors gathered at Palo Verde Park to watch street lights flicker to life.

After seven years of working and waiting, more than 300 mercury vapor lamps lit up the square mile.

Mayor Lew Davis attended the ceremony and the police chief called the area "the show window of a progressive community."

It was the largest individual street lighting project in the entire state, Davis said. The ceremony included a "concert under the lights" by Palo Verde High School's marching band as well as a color guard from the American Legion.

Painted Rocks Needed for Sept 12 Labyrinth Build

Event Begins at 8 a.m.



Life Stones



A Labyrinth is Coming to Palo Verde Park

Paint an
inspirational
rock to help
guide the way!

Labyrinths are an ancient tool that can be useful
in meditation or prayer. We are consulting
experts as we design one for the east side of the
park.

Paint a rock to leave in the labyrinth to guide
our path.

Get in touch for more information

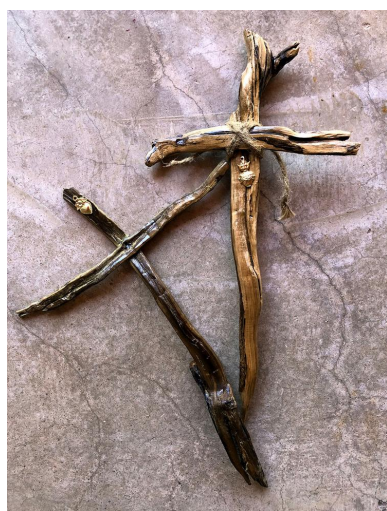
rhondabb@hotmail.com

Art Donations Coming in for our Upcoming Online Auction



Art is one of the foundational values of our neighborhood. From our mural to the fact that Kellond is an Opening Minds Through Art school, it's an essential part of who we are.

So it seems appropriate that art can help us offset the costs of investing in infrastructure and events.



Art contributions? Questions? Contact rhondabb@hotmail.com for information!

Art donations are already coming in across a variety of mediums, from handpainted furniture to a beautiful photograph from neighbor Charles Palmer of Illusions of Beauty to handcrafted salvaged wood crosses by Fred Araiza. We anticipate pieces from well-known neighborhood artists Angela Pittenger, Tony Peralta, Leah Crain, Gay Scheibl and more! Stay tuned!

Hat Tip to a Good Samaritan

Our bridge on the east side of the park was built by volunteers of the U.S. Naval Reserve Construction Battalion in 1959. It needed a little sprucing up, so plans were made to paint the bridge at a dedication ceremony in November around Veteran's Day.

A lovely neighbor beat us to it!

The gentleman painted the bridge a deep royal blue and we are so grateful. Stay posted for the commemoration ceremony, where we will install a bronze plaque recalling the efforts of the veterans, but the bridge now looks cared for again.

Nice work, friend!



Traffic Calming Signage Pilot Underway on Jessica

The City of Tucson provided Palo Verde Park Neighborhood with several signs that line Jessica, asking parkgoers and other drivers to drive like they live here.

It's part of the Slow Down yard sign pilot program, designed to remind drivers that slowing down saves lives.

The yard signs are available to Tucsonans who take the traffic safety pledge and commit to driving at safe speeds, watching for pedestrians and yielding to them at every corner, put the cell phone away and be alert at intersections.



First Yard Clean Up Scheduled for September!

Sometimes, you just need a little help. One of our aging Mañana Vista neighbors could use a little assistance sprucing up the yard. Missionary students from the Church of Jesus Christ of Latter Day Saints will join neighborhood volunteers to trim, rake and weed. The event will take place toward the end of September. If you have an hour to spare for a good deed, reach out for more details on where and when to meet.





**A SENSE OF HISTORY
A SENSE OF PLACE
A SENSE OF CONNECTION**

SUPPORT OUR SIGN DRIVE

**OUR GOAL IS TO MARK EVERY ENTRANCE TO OUR
NEIGHBORHOOD WITH ONE OF THESE SIGNS.
@\$250 A CORNER - EVERY DOLLAR HELPS!**

**Visit our website to donate directly
to our GoFundMe campaign:
paloverdeparkneighborhood.com**

A note of thanks to our sponsors

Applause to Tread Lightly Carpet Care! Owner Matt Russell, a Palo Verde Park Neighborhood resident, was our first sign sponsor! He and his wife, Cathy, support all of our events and have been critical to Park Fest.

- Arizona Beer House has been a stalwart friend.
- Little Anthony's donated ice cream for our ice cream social
- Stewart Title & Trust of Tucson, Inc. has also been a good friend, as has Community Medical Services, which donated a sign at Broadway and Jessica across from their center.
- Bookmans supported our Zombie Walk with a trunk or treat; Brian and Kelly's Pumpkins gave us lots of little pumpkins for our little punkins to decorate.
- All of the businesses who have supported our fundraising event raffles

Other event and sign sponsors include:

Andy and Diane Weiss

Vonnie Baldwin

Jeremy and Rachael Blackketter

Mike Southworth and Giuliano De Santis

Mike and Toni Krause

Mia Ford

Norma and Dave Coffman

Rhonda Bodfield and Fred Araiza

Christine Cerda

Brett Lange

Connie Sadler-Nelson

And everyone who contributed to our Go Fund Me page!