

APPROVALS

I hereby certify that this plat was approved by the Board of Supervisors, Pima County, Arizona, on the 13 day of April, 1955.

Francis C. Hall 7-6-55
CLERK, BOARD OF SUPERVISORS DATE

DEDICATION

We, the undersigned owners of the land shown on this plat do hereby consent to the subdivision of said land in the manner shown hereon and hereby dedicate to the use of the public for ever all streets, roads, thoroughfares, alleys so designated on this plat together with a 5' aerial or overhead easement on each side of said alleys for wires and crossarms on power and pole lines.

Yale Epstein
Mildred A. Epstein
Karl Zamost
Margaret Zamost

STATE OF ARIZONA SS
COUNTY OF PIMA
This instrument was acknowledged before me this 13 day of April, 1955, by Yale Epstein and Mildred A. Epstein, his wife, and by Karl Zamost and Margaret Zamost, his wife.

H. F. Bagheri
NOTARY PUBLIC
My commission Expires June 22, 1956

RECORD DATA

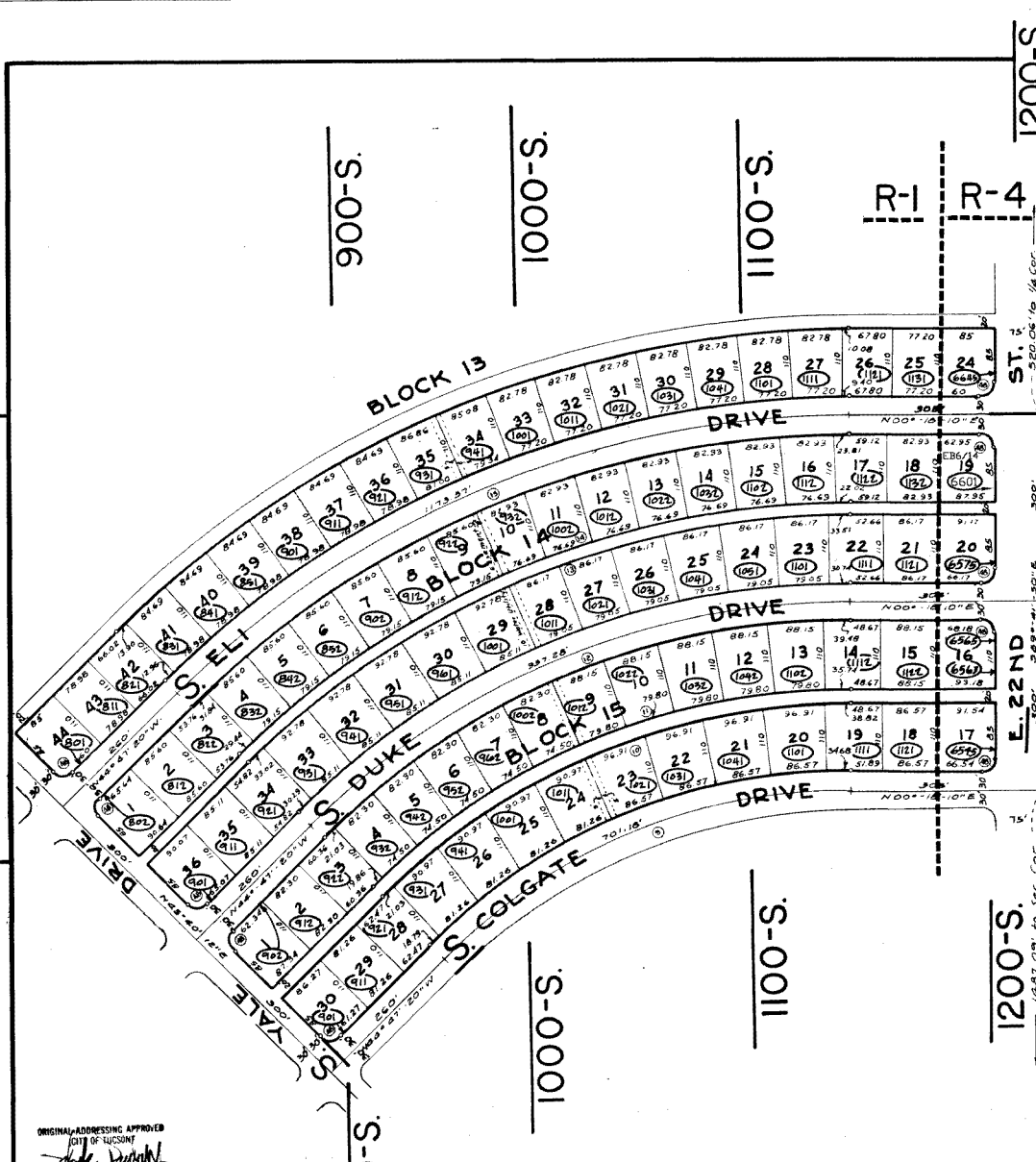
ANNOTATED COPY

YALE ESTATES
BLOCKS 13 TO 15

BEING A SUBDIVISION OF A PORTION OF THE SW 1/4 OF SECTION 18, T-14-S, R-15-E PIMA COUNTY, ARIZONA.

Scale: 1" = 100' MARCH, 1955

William A. Armstrong
REG. PROF. ENGINEER
REG. LAND SURVEYOR



ORIGINAL ADDRESSING APPROVED
CITY OF TUCSON
John P. ...

CITY OF TUCSON
MAP 29
ZONE R-1,
R-4

CURVE DATA				GENERAL NOTES
NO	Δ	R	ST. L	
9	45°-05'-30"	890.95	369.88	701.18
10	45°-05'-30"	1030.95	428.00	811.96
11	45°-05'-30"	1030.95	436.30	827.10
12	45°-05'-30"	1170.95	496.92	937.28
13	45°-05'-30"	1330.95	556.55	1047.46
14	45°-05'-30"	1510.95	640.68	1263.78
15	45°-05'-30"	1490.95	618.97	1173.37
16	45°-05'-30"	1630.95	677.09	1283.55
28	90°-00'-00"	25.00	25.00	39.27

• Set 3/4" iron pins at PC & PT of curves as shown.
All distances measured to hundredths of feet.
○ Curve No. - Details of which are in table labeled "CURVE DATA"