

UNSUBDIVIDED

PHD O.P. 25 SECCOR

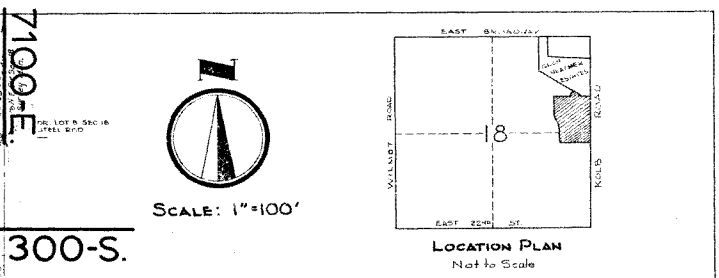
NOTES

Bearings shown are based upon bearings of Kolb Road as shown on Plat of Glen Heather Estates, recorded in Book 12 - Page 3.

- Represents 3/8" Pipe set, unless otherwise noted.
- Represents 1/4" Lead Capped Pipe set.
- or ⊙ Represents a Curve. See Table.
- Set Back Line (Minimum Building)

CURVE NO.	CENTRAL ANGLE	RADIUS	CHORD	LENGTH
1	13° 30' 00"	500.00	59	117.81
2	13° 00' 00"	500.00	58	105.89
3	13° 30' 00"	500.00	58	87.60
4	43° 00' 00"	375.00	147	281.33
5	47° 30' 00"	280.00	121	225.48
6	24° 23' 30"	649.81	140.12	276.00
7	30° 00' 00"	779.19	179.88	363.57
8	30° 53' 00"	436.24	117.23	231.98
9	38° 12' 00"	130.00	51.24	100.00
A	50° 00' 00"	25.00	25.00	33.27
B	97° 59' 33"	49.00	12.87	24.30
C	106° 26' 20"	75.00	33.44	46.44
D	177° 53' 55"	25.00	20.00	33.84
E	124° 51' 00"	35.00	48.91	58.45

**CITY OF TUCSON
MAP 28
ZONE R-1**



DEDICATION

The undersigned owners of the land shown on this plat do hereby consent to the subdivision of said land in the manner shown hereon and hereby dedicate to the use of the public for all streets, drainage ways, drives, places, avenues, easements and alleys so designated on this plat. Utility easements are hereby dedicated for the purpose of constructing and the maintaining of public utilities only, with an additional overhead easement on each side of the easements for wires and crossarms etc. on power and pole lines, within the boundaries of the said easements.

Arizona Land Title & Trust Company, an Arizona Corporation, as Trustee under Trust Agreement Dated 11/14/52 and known as Trust No. 5135 T.

By: J. B. Combs
Vice President

The Lusk Corporation, An Arizona Corporation

By: John Lusk
Vice President

PHOTOSTATIC ON FILE
11/75/103
See Plat 75

State of Arizona
County of Pima

The foregoing instrument was acknowledged before me this 5th day of April, 1957 by John Lusk Vice President of Lusk Corporation, for the purposes herein contained.

Notary Public
My commission expires: 5-22-57

State of Arizona
County of Pima

The foregoing instrument was acknowledged before me this 11th day of March, 1957 by John Lusk Vice President of Lusk Corporation, for the purposes herein contained.

Notary Public
My commission expires: January 20, 1960

APPROVALS

M. A. Stachurski
Chairman, Planning and Zoning Commission
Date: Apr. 1957

MAYOR AND COUNCIL

I, Mary Fields, Clerk of the City of Tucson, hereby certify that this plat was approved by the Mayor and Council of the City of Tucson, State of Arizona, on this 11th day of April, 1957.

Mary Fields
Clerk, City of Tucson
Date: 4/11/57

John Lusk
City Engineer
Date: 4/11/57

BOARD OF SUPERVISORS

I, Mona Hanna, Clerk of the Board of Supervisors, hereby certify that this plat was approved by the Board of Supervisors of Pima County, State of Arizona, on this 11th day of April, 1957.

Mona Hanna
Clerk, Board of Supervisors
Date: 4-11-57

John Lusk
County Engineer
Date: 4-11-57

CERTIFICATION OF SURVEY

This is to certify that the plat shown hereon was completed under my direction.

Tommy Peterson
Registered Land Surveyor

GLEN HEATHER ESTATES
LOTS 53 TO 59 & LOTS 75 TO 169

BEING A SUBDIVISION OF A PART OF THE E 1/2 OF E 1/2 OF SECTION 18, T-14-S, R-15-E, G. & S.R.E. & M. PIMA COUNTY, ARIZONA

ORIGINAL ADDRESSING BY: John Lusk